

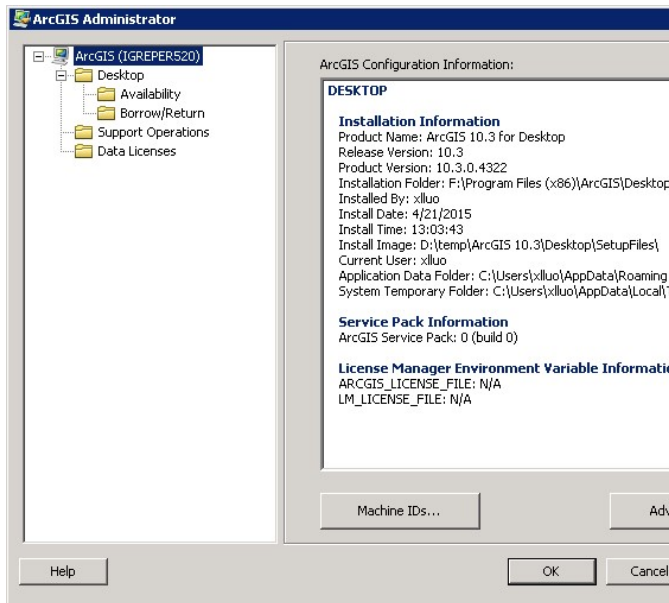
Please follow the instructions below to activate your software.

1. On your computer, click on Start and in the search programs and files box type in **arcgis administrator**

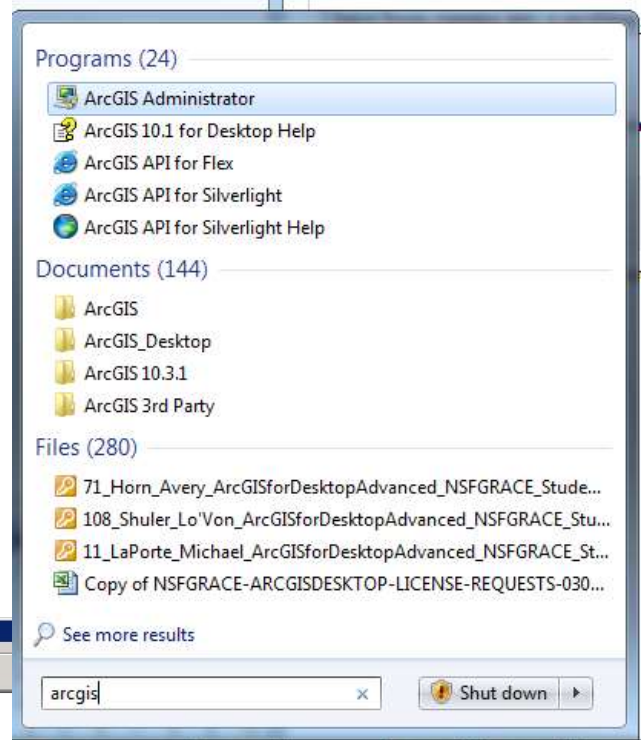
You should see ArcGIS Administrator in the list. So click on it.

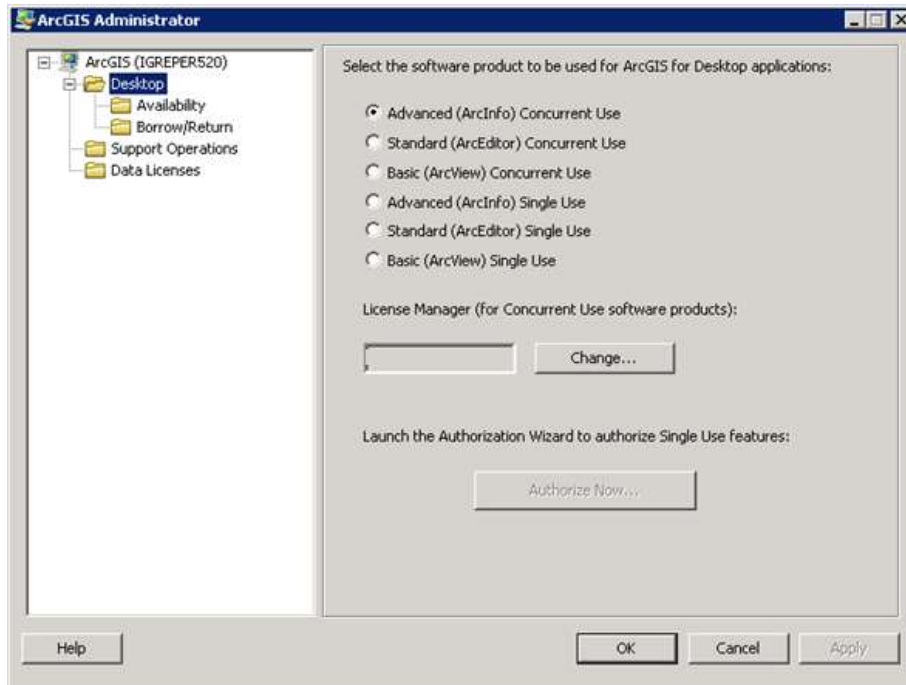
It may ask you to confirm on that small window, click on yes

2. Then you will see a new window similar to the following one.

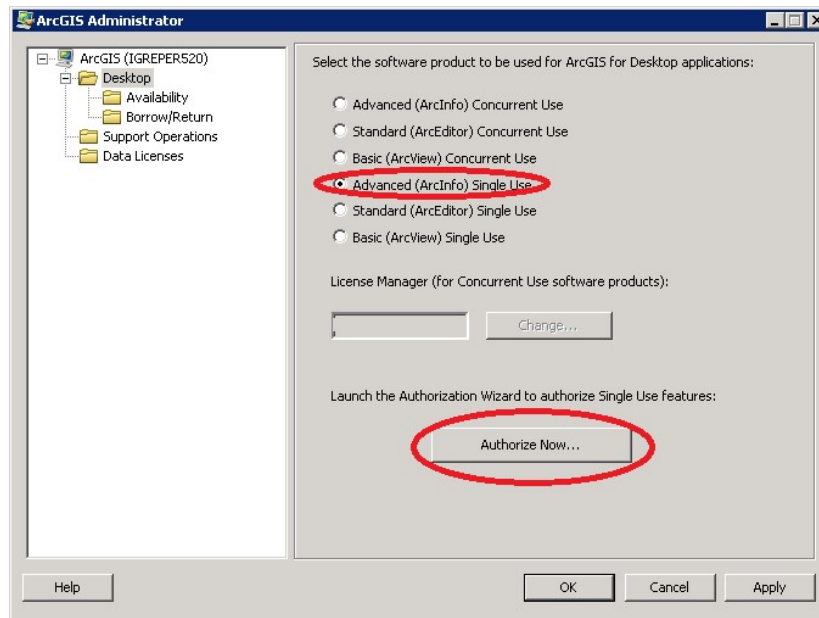


3. Click on "Desktop"





4. Check **“Advanced (ArcInfo) Single Use”** and then click on **“Authorize Now...”**



5. The rest of the steps should be on the installation guide.